

Compliance in Practice

Enabling healthy security practices that align
with current standards and regulations

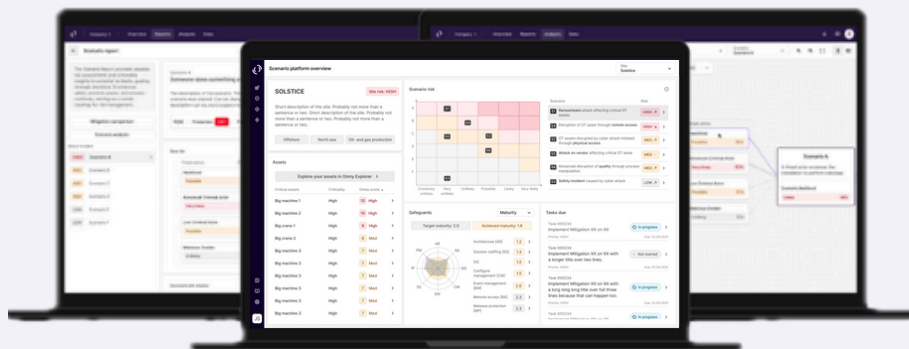


Navigating industrial cyber compliance

Compliance plays a vital role in industrial operations, shaping not just risk management but also long-term strategy. In highly regulated sectors such as oil and gas, energy, and manufacturing, the stakes are high, and the rules are constantly evolving. Industrial companies are subject to a higher number of regulations because of the significant impact their operations can have on people, the environment, and the economy. Omny helps organizations move from reactive to proactive security compliance, offering real-time visibility, traceability, and alignment with key cybersecurity standards and frameworks like IEC 62443, ISO 27001, ISO 22301, ISO 9001 & NIST CSF just to name a few.

The challenge

Industrial organizations face an expanding array of regulations, as a surge in cyberattacks drives stricter compliance requirements under new directives such as NIS2 and revised national laws. Traditional tools fail to capture the complexity of operational environments, making it difficult to align regulatory obligations with the technical realities. With overlapping mandates from multiple authorities and a heightened focus on cybersecurity, the compliance burden can be both daunting and overwhelming.



Omny's solution

Omny delivers practical, scalable compliance management designed for complex industrial settings. The platform enables security, IT, and compliance teams to work from a shared source of truth to streamline workflows, reduce manual effort, and maintain continuous audit readiness.

What Omny enables:

- **Continuous compliance management:** Automate assessments, reporting, and evidence collection across frameworks like IEC 62443 and ISO 27001.
- **Change verification & traceability:** Ensure design and implementation remain aligned. Every change, from firewall updates to asset reclassification, is documented and linked to compliance requirements.
- **Operational risk insights:** Go beyond checklist compliance. Understand where your greatest risks are and how to address them effectively.

Future-ready compliance: Scenario modeling and AI-driven insights to help organizations anticipate and adapt to change.

Putting it into practice

For organizations with compliance deadlines approaching, whether driven by NIS2, ISO 27001, or IEC 62443, the Omny platform offers a structured and efficient path forward. Here's how it could work for your organization in practice:

- **Assess your current state:** Upload existing reports and map current security controls to multiple standards simultaneously.
- **Identify gaps:** Use Omny's real-time dashboards and analytics to discover where requirements are not yet met.
- **Track and verify changes:** Every technical update, such as firewall rules or asset classification, is logged and linked to compliance objectives.
- **Streamline evidence collection:** Automate documentation and reporting, reducing time spent preparing for audits.
- **Align stakeholders:** Share tailored views with technical teams, compliance officers, and executives to support a coordinated compliance effort.

Whether you're in the early stages of your compliance journey or preparing for your next audit, Omny gives you the visibility, traceability, and confidence you need to meet regulatory expectations head-on.

Our core technologies

Omny's platform is built on powerful, purpose-driven technologies that translate complex data into actionable insights, helping organizations stay compliant with confidence and clarity. These are the technologies we deploy to ensure compliance in practice:

An industrial security graph



A flexible scalable knowledge graph Integrates and organizes operational data into a unified, dynamic model of your environment. This graph provides a more accurate and relevant view of your organization's security posture, modeling of relationships between data entities, and predictive analytics to identify potential threats.

AI-powered risk engine

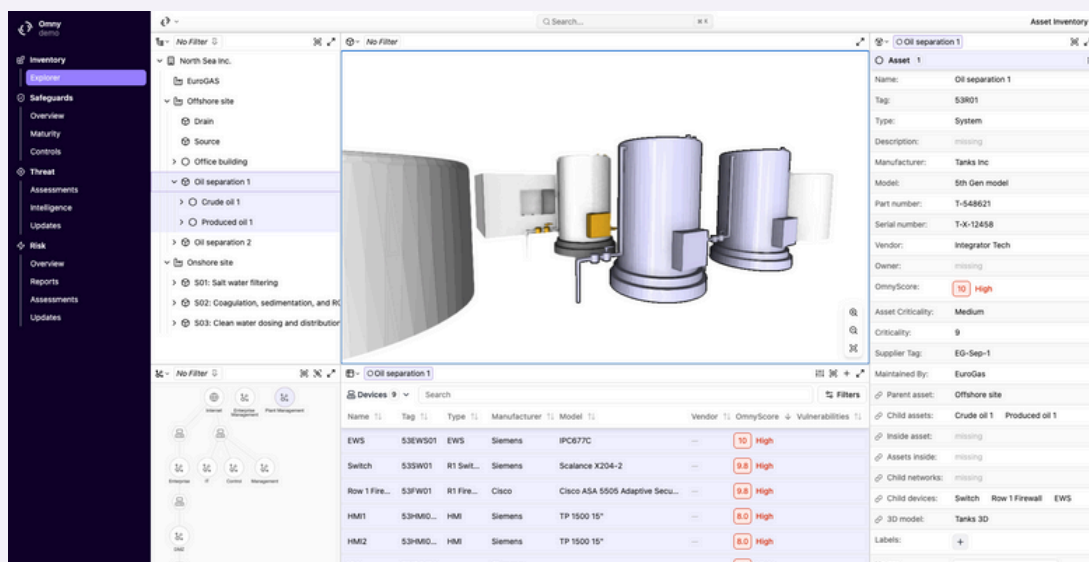


Our product's analytics engine delivers sophisticated, non-linear risk estimations for deeper visibility into compliance exposure. This means that you can identify and mitigate cyber threats with greater confidence.

Interactive dashboards



Our interactive and intuitive visualizations of risk data allows you to quickly and easily identify patterns, relationships, and potential vulnerabilities in your infrastructure systems, in order to communicate your compliance status clearly to technical teams, executives, and auditors.



About Omny

Omny is on a mission to make sense of increasingly complex threats to society's most critical infrastructure. Our software leverages the latest advancements in data science and technology to mitigate these threats. Born from the industry and built on domain expertise, Omny is positioned to help companies face their cyber challenges. Omny has an international vision with its headquarters in Oslo, Norway and an additional office in Stavanger, Norway.

To learn more about our products and services, we can be reached at info@omnysecurity.com.

